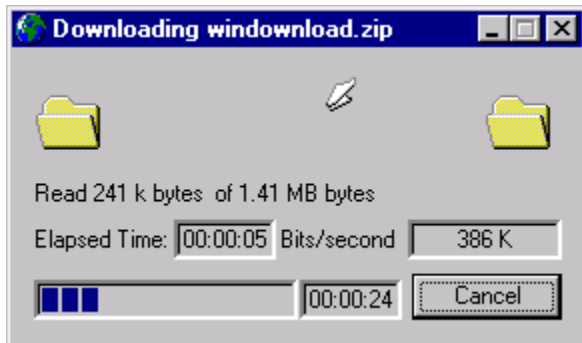


## Clipboard Operations

- Cut will copy all selected items to the windows clipboard and then clear the selected items.
- Copy will copy all selected items to the windows clipboard
- Paste will insert valid urls that are in the windows clipboard
- Clear will clear (delete) selected urls from the view.



## Now Downloading Items



To Download an item(s), select them and do one of the following:

- Click the "now" button
- Right click in the view and click download now menu item
- click download menu and select download now menu item

The above dialog will be displayed while downloading the file.

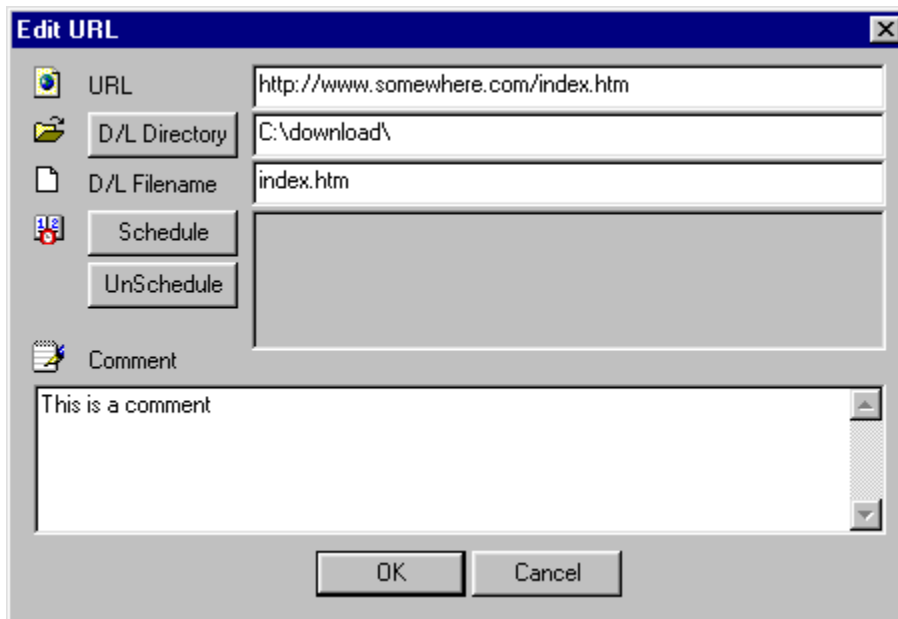
The following information is displayed:

- Bytes read of total bytes (total bytes available only on http links)
- Elapsed time since downloading started
- Bits / second - average of bytes downloaded / total time
- Progression bar displaying amount of work accomplished (http)
- Estimated time left - bytes left / bits per second (http)

The cancel button will cancel the download



## Editing in WinDownload



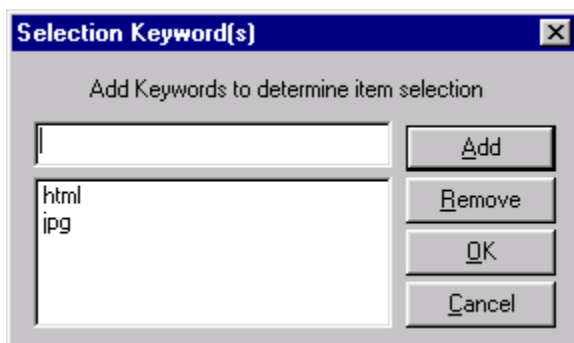
To edit a url once it has been inserted, select it and do one of the following:

- Double click the file
- Click the "Edit" button
- Right click in the view and click Edit menu item
- click Edit menu and select the Edit menu item

Once in this dialog, you can:

- Change the Url
- Change the Download directory from the default
- Change the Destination filename
- Schedule the item
- Modify the comment

Note: In order to delete the schedule time, hit the schedule button and then the cancel button.



You can select items in the view by specifying case sensitive keywords to look for in the URL.

## File Operations

New - Displays the Edit dialog allowing you to enter all the info for a new item.

Open - Loads a previously saved WinDownload file

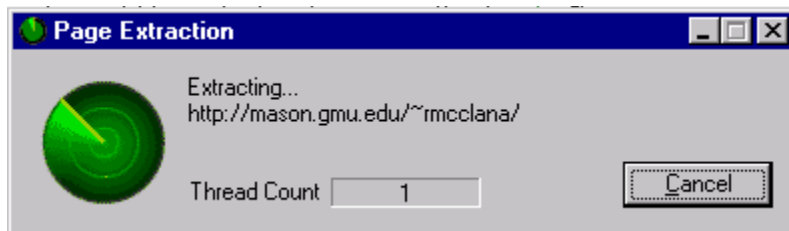
Save - Saves all links in view to a WinDownload file



## Page Extraction

Page extraction will allow WinDownload to grab all links from a given url. To recursively tunnel through all the links found, include html and htm in the extensions to extract. This is useful when going to a site full of jpps or gifs.

For configuration of Page Extraction, see the [config](#)



The above window will be displayed during extraction.

Extracting... <url> displays what url is currently being extracted.

Thread Count is the number of simultaneous threads running to complete extraction.

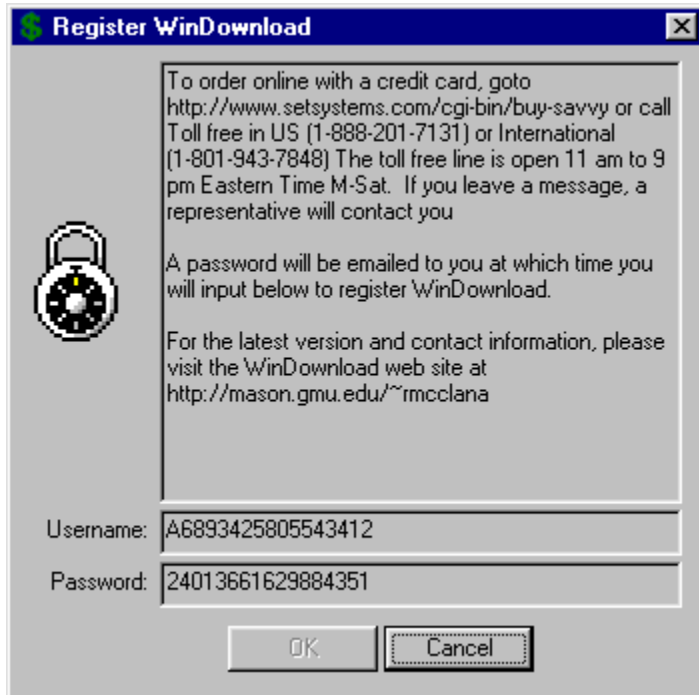
This number can become quite large if you are recursively extracting urls.

The cancel button will terminate further extraction but will not close dialog until all threads have terminated.

If left to completion, the cancel button will become a "close" button which must be pressed to close the window. If left up, future page extractions will reuse the window.



## Registration and Support



Support is always available by email for registered and unregistered user alike. Send email to [windownload@bigfoot.com](mailto:windownload@bigfoot.com)

Registration is \$20 US Include the username, and a password will be emailed to you.

See the WinDownload webpage for more info: <http://mason.gmu.edu/~rmcclana/>

To register Online:

-----  
HOW TO PURCHASE WinDownload  
-----

setSystems accepts several different payment methods. All payments made to setSystems must be made in U.S. Dollars drawn from U.S. banks. Payments made to setSystems with a credit card will appear on your statement based on your bank's payment cycle and will appear on your statement as originating from setSystems.

You may order by credit card in any of the following ways.

1. On the Internet: <https://www.setsystems.com/cgi-bin/buy-savvy>

You can order with a Visa, MasterCard, American Express, or Discover card over the World Wide Web using a secured

form. All information sent this way is encrypted using SSL technology for your protection. This is the fastest way to order. You will know within two minutes whether the order was approved.

2. Telephone:  
U.S. (toll-free): 1-888-201-7131  
International: 1-801-943-7848

The toll-free phone line is open from 11:00 a.m. to 9:00 p.m. (Eastern time), Monday through Saturday. Outside of those hours, you may leave a message and a customer service representative will contact you the next business day. If you are calling from North America, leave your name and a phone number, and your call will be returned. If you are calling from outside of North America, leave your name and E-Mail address, and someone will respond by e-mail to your message.

Please have all information requested by the registration form available so that we may expedite your order. See the registration form below. Orders placed by phone may take up to one business day to be processed.

3. FAX: 1-801-942-3396

When ordering by FAX, please provide the information requested below. Orders placed by FAX may take up to one business day to be processed.

4. E-mail: [sales@setsystems.com](mailto:sales@setsystems.com)

When ordering by e-mail, please provide the information requested on the form below. Orders placed by e-mail may take up to one business day to be processed.

If you are familiar with PGP, you may encrypt and send your credit card order to us using our PGP Public Key. We will then decrypt the order and process it manually. If you prefer to order via e-mail, this is the method that we recommend. Our PGP Public Key is shown below.

-----BEGIN PGP PUBLIC KEY BLOCK-----

Version: 2.6.2

```
mQCNAzP7oK0AAEEAMptpLWI7AhaZXI80SihnLkSnboaFIB/a2gyfAgIrcI6w5qr
AftV4Om5/2TJYGKUXEiYzjyhSf6VcPbrqc+F+FWQpyqBxpZXdETIUmxM3HBGpD3W
YnjwjE6Z5jQAKWZp3DKLgIPM/fhPGGPVZZerRL28pTeiHKw396Mzx62ZjzR5AAUR
tCVzZXRTeXN0ZW1zIDxrZXItYXN0ZXJAc2V0c3lzdGVtcy5jb20+
=aG44
```

-----END PGP PUBLIC KEY BLOCK-----

-----  
ORDER FORM -- for phone, fax, and e-mail orders  
-----



[\*\*\*\*\* developer, add any other info you require \*\*\*\*\*]

Your Name:

Billing Address (the address your credit card bill is sent to)

Street:

City:

State:

Zipcode:

Country:

Mailing Address (if different than billing address)

Street:

City:

State:

Zipcode:

Country:

Home Phone Number:

Work Phone Number:

E-mail Address:

Credit Card Information

Type (Visa, Mastercard, American Express, Discover)

Account Number:

Expiration Date:

Software to Order

Title:

Quantity:

Total Dollar Amount:

If FAXed or e-mailed, please include the following language (and sign if FAXed):

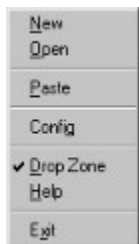
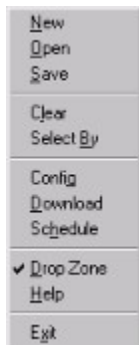
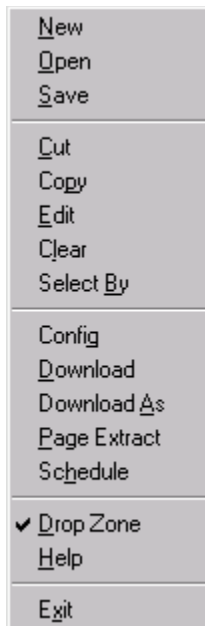
I authorize setSystems(TM) to bill my credit card and agree to pay the total amount according to card issuer agreement.

\_\_\_\_\_  
Signature

\_\_\_\_\_  
Date

-----

## Right click Popup menu



Popup menu to interface to WinDownload from either the drop zone window or from right clicking inside the main view.

The popup menu will only contain the items that are applicable at that time



## Later Scheduling Items

**Delivery Date/Time**

**December 1997**    December    1997

Sun	Mon	Tue	Wed	Thu	Fri	Sat
30	1	2	3	4	5	6
7	8	9	10	11	12	13
14	15	16	17	18	19	20
21	22	23	24	25	26	27
28	29	30	31	1	2	3
4	5	6	7	8	9	10

Start Time: 01:18 AM    OK    Cancel

Persistent Schedule

Repeat Interval: 1 Hours 30 Minutes

Stop Time: 03:00 AM

Monday     Tuesday     Wednesday     Thursday

Friday     Saturday     Sunday

Initial start time will be at: 01:18 AM on Tuesday, December 23, 1997 repeating every 1 hours and 30 minutes until 03:00 AM and again every Sunday, Saturday

To schedule an item for download, select file(s) and do one of the following:

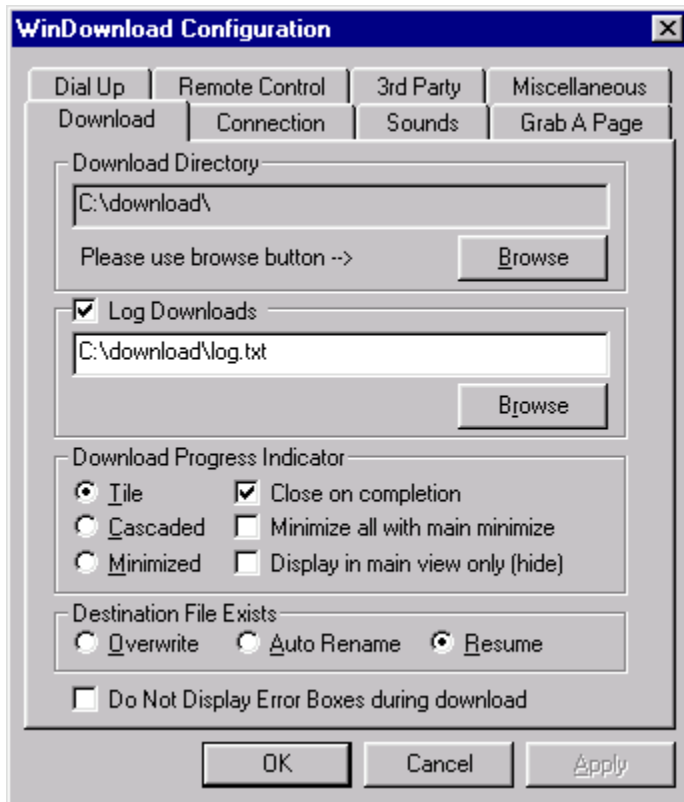
- Click the "Later" button
- Right click in the view and click download later menu item
- Click download menu and select download later menu item

An Item can be scheduled to be persistent. That means that you can have the same item downloaded over and over again. Use the textual description at the bottom to help create the schedule you desire.

Once scheduled, the item will lay dormant until the schedule time at which time it will be downloaded



## Config WinDownload Configuration



### Download Directory

Use the browse button to select a default download directory. This is where all files will be placed after download by default.

### Log Downloads

Check Log Downloads if you want log information about files that have been downloaded successfully. Click the browse button to select the log file name to record information to.

### Download Progress Indicator

The progress indicators are the dialogs displayed while downloading

#### *Position*

The indicators can be tiled, cascaded or minimized while downloading

#### *Close on Completion*

Will automatically close the progress indicator when complete.

### *Minimize All With Main*

Will minimize all progress indicators when WinDownload is minimized

### *Display In Main View Only*

Will not display a download dialog, but will display download status in the main view.

## **Destination File Exists**

*Overwrite* will overwrite the destination file if it exists

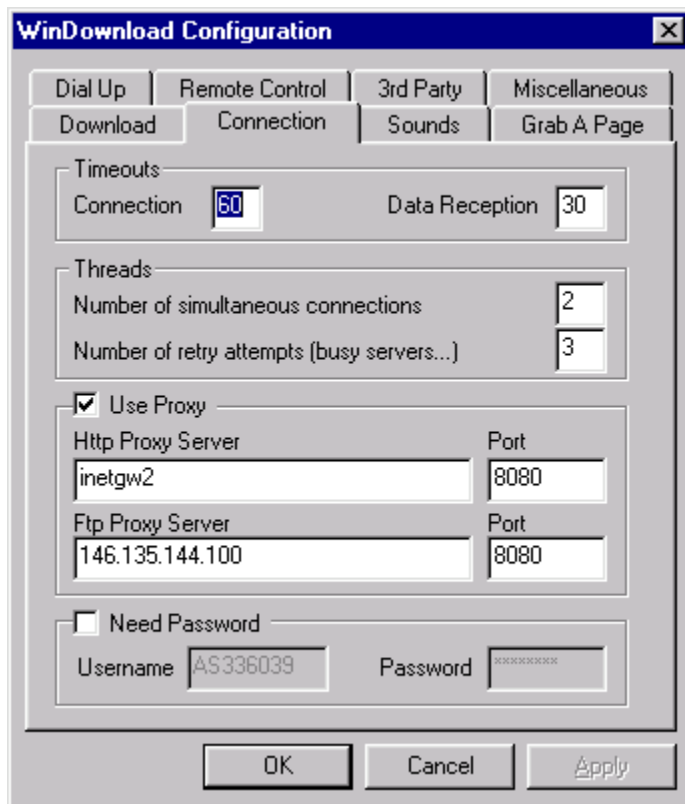
*Auto Rename* will automatically create a new name for the file if it exists

*Resume* will seek forward and resume downloading if the file exists

(Resume only works for sites that support it - usually http 1.1)

### *Do Not Display Error Boxes During Download*

Will suppress any error dialogs while downloading for unattended downloading



## **Timeouts**

*Connection* timeout is how long WinDownload will wait for a connection

*Data Reception* timeout is how long WinDownload will wait to receive data.

## **Threads**

### *Number of Simultaneous connections*

This will limit the number of threads that will be started to simultaneously download files. On a 28.8 modem connection, the optimal number will be a 2-3. On a T3- leave it at 999!

In order to do serial downloading (1 at a time, each waiting for the previous), set the # to 1.

### *Number of retry attempts*

This will limit the number of times WinDownload will attempt to download the file if the download was not successful. If the error is determined to be absolute, the retry is ignored. An example of an absolute error is when the server returns that the object is not found.

### **Use Proxy**

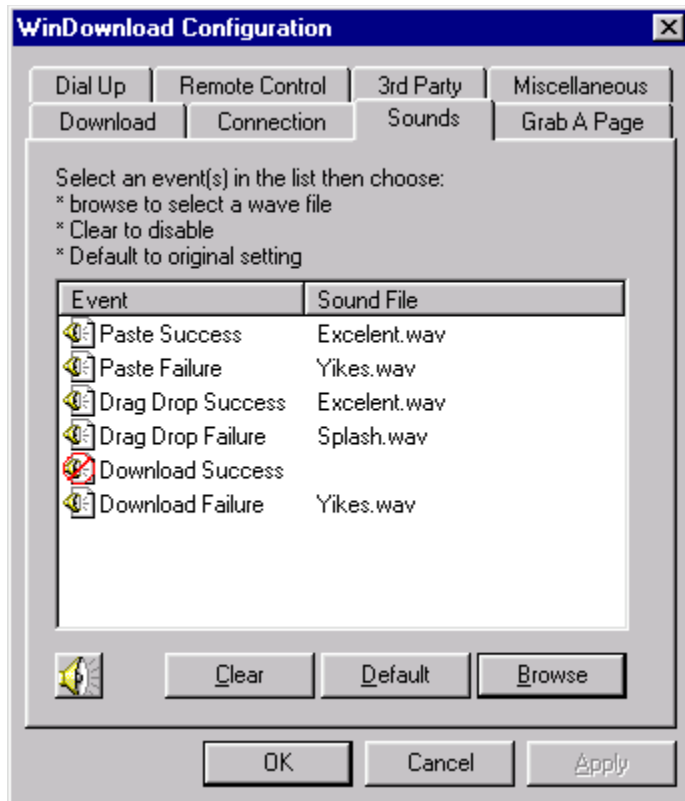
This will allow WinDownload to forward requests through a proxy. Check your browser settings to determine if you are currently using a proxy.

*Http Proxy Server / Port* is the specified HTTP proxy address and port

*Ftp Proxy Server / Port* is the specified FTP proxy address and port

### **Need Password**

This feature will allow you to enter into secure sites requiring a username and password.

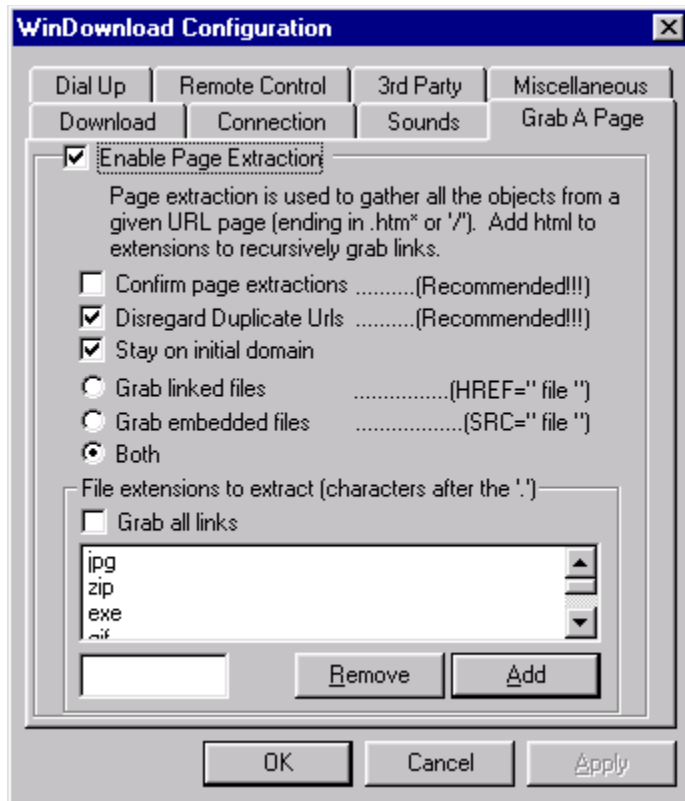


The sounds are configurable for the different events that WinDownload recognizes.

To Disable a sound event, select it and click Clear

To Re-Enable a sound event, select it and click either Default or Browse.

To hear the file, select it and click the button with the speaker bitmap on it.



Page extraction will allow WinDownload to grab all links from a given url. To recursively tunnel through all the links found, include html and htm in the extensions to extract. This is useful when going to a site full of jpgs or gifs.

*Enable Page Extraction* select it to allow page extractions to occur.

*Confirm Page Extractions* will prompt you to extract a page. **Recommended**

*Disregard Duplicate Urls* will eliminate duplicate urls. **Recommended**

*Stay on Initial Domain* - will keep WinDownload from extracting pages that do not reside on the

initial domain. i.e. `http://mason.gmu.edu/~rmclana/index.html` has mason.gmu.edu as the

initial domain so html pages located on `www.microsoft.com` will not be extracted.

*Grab linked files* will grab files that are linked with the HREF keyword.

*Grab embedded files* will grab files that linked with the SRC keyword.

(embedded files are usually pictures that are actually displayed on a page)

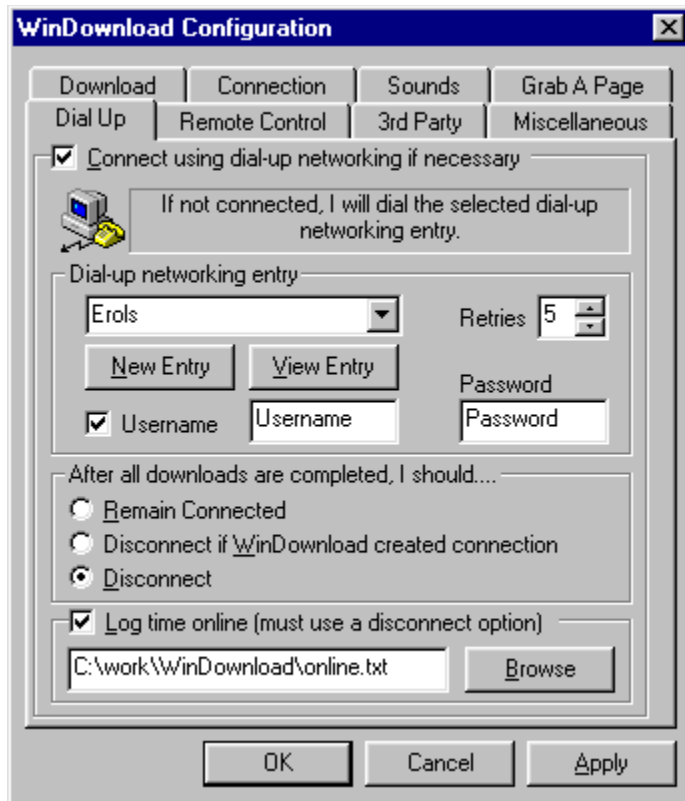
*Grab all links* will not check for the extensions, but will grab ANY link specified above

*Extensions* are file identifiers that follow a '.' such as zip or jpg. No need to enter the '.' when specifying an extension to grab.

To add an extension, enter it into the text field and click Add.

To remove an extension(s) select it and click Remove





Dialup Networking support now available in WinDownload. If enabled, WinDownload will check for an active connection before processing any download requests. If there is no active connection, WinDownload will dial the dialup networking connection of your choice to establish the connection. Optional, WinDownload can then disconnect after completion of all downloads. If You choose to have the connection terminated, you can also log the time online for future billing reference.

### **Dial-up networking entry**

This is the entry that WinDownload will dial when needed.

*New/View/Delete* will activate the corresponding action on the selected dialup networking entry.

*Retry Attempts* will retry to make a connection this many times

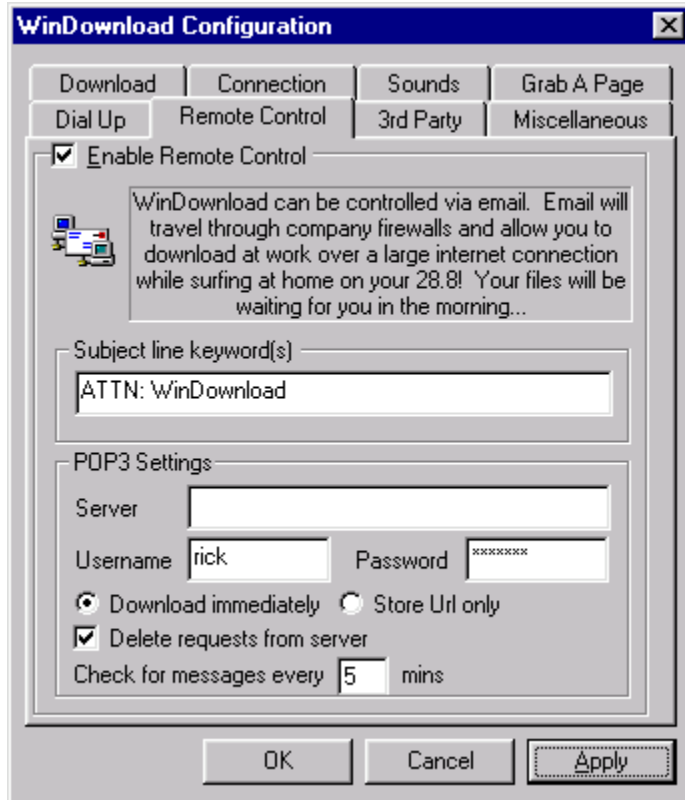
### **After all downloads are completed, I should...**

After all downloads are completed (no queued items left) WinDownload can disconnect or remain connected.

### **Log time online**

This option requires that you let WinDownload disconnect after downloading completes. WinDownload will then calculate how much time was spent connected and log this

information to a file of your choice.



Email remote control allows you to control WinDownload from a different location by sending an email to your remote location with predefined subject line. WinDownload will download only the messages marked for it's attention and will not disturb the remaining email messages you may have. Email was chosen as a transport rather than a direct connection as most people will want to use this feature to download at work while they are surfing at home and most work locations are protected by firewalls that prevent direct connections. The email message can have multiple urls and additional text in the body and WinDownload will only pull the valid urls from it. However, the url must be the only thing on the line that it exists on.

### **Subject Line Keyword(s)**

These are the CASE SENSITIVE keywords that must appear in the email subject line. If there is more than one keyword, the ENTIRE phrase must exist in the subject line. The case sensitivity makes for superb security, keeping unwanted download requests from being processed by your copy of WinDownload. Only you will know the exact words and case of the download phrase you use.

### **POP3 Settings**

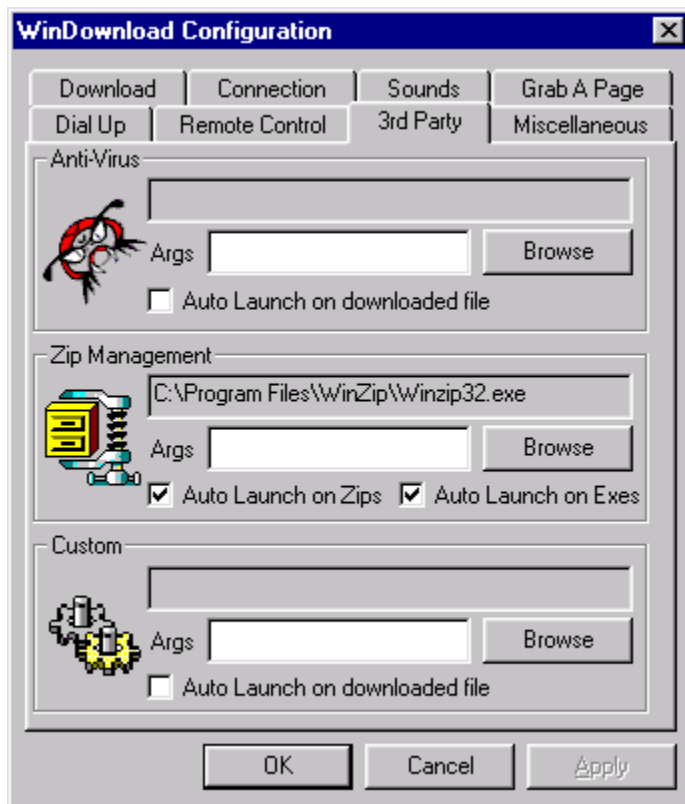
*Server* - This is the POP3 server, usually the same as the domain of your email address  
*Username* - This is the username on the POP3 server you will be accessing

*Password* This is the password for the above account (it will be encrypted in the registry for security purposes)

*Download Immediately* - will cause WinDownload to download the url immediately  
*Store URL only* - will NOT download the urls, but simply store them in the main view

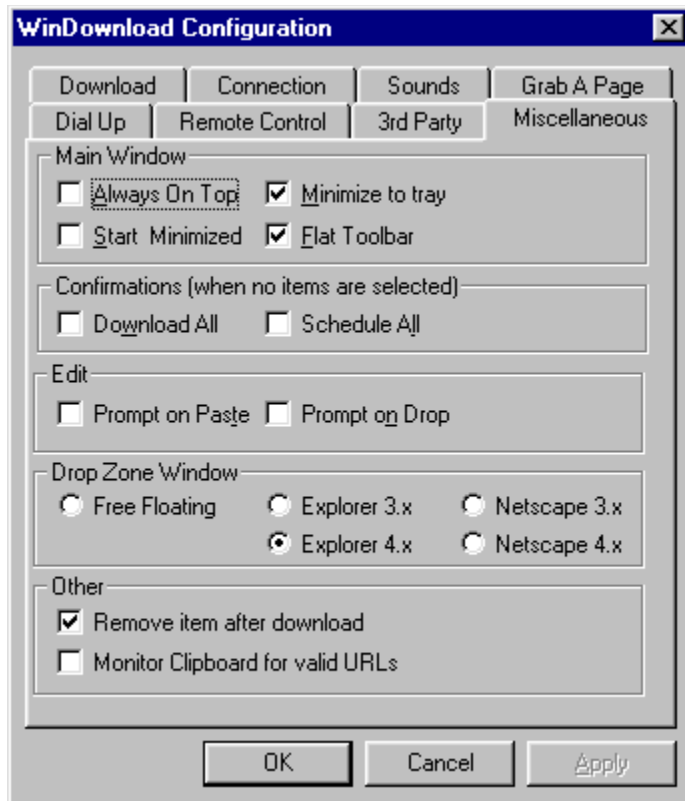
*Delete Requests From Server* - will cause WinDownload to delete the download request from the server after retrieving it.

*Check For Messages Every XX minutes* - will determine the length of time between checks for download requests



Third Party programs can be configured to run on the downloaded files once they have been successfully downloaded. Configured as Auto Launch, will launch the program as soon as downloading completes.

The Anti-Virus program will be launched on every file if enabled  
The Zip Management program will be launched only on Zips or Exes if so enabled.  
The Custom program can be specified by the user and will be launched on all files if enabled.



## Main Window

*Always On Top* - keeps WinDownload above all other program on your desktop

*Start Minimized* - Starts WinDownload in a minimized state

*Minimize to Tray* - When minimized, WinDownload will be placed in the system tray

*Flat Toolbar* - Will caused WinDownload's toolbar to appear flat

## Confirmations

Confirmations are message boxes prompting user for confirmation on an action.

*Clear All* - If no items are selected, confirm to clear all items

*Download All* - if no items are selected, download all items

*Schedule All* - if no items are selected, schedule all items.

## Edit

The Edit dialog will be displayed if so instructed.

*Prompt on Paste* - Edit the pasted item.

*Prompt on Drop* - Edit the dropped item.

## Drop Zone Window



This is a small window that can be used to drop links into with the main app minimized

*Free Floating* - the window will be free floating on desktop.

*Internet Explorer* - parented to the Internet Explorer 3.x

*Internet Explorer* - parented to the Internet Explorer 4.x

*Netscape 3.x* - parented to the Netscape 3.x window

*Netscape 4.x* - parented to the Netscape 4.x window

Note: You must go to the view menu and select "view drop zone"

double click the window and WinDownload will be un-minimized and brought to the top of all other windows.

Right click the window and a popup menu will be displayed to interface to WinDownload

Left click and hold to move the window.

The icon in the window will display a closed box if no items are in WinDownload.

*Remove Item After Download* - Will remove the item from the main view once it has been downloaded



# WinDownload Overview

[WinDownload Configuration](#)

[Editing in WinDownload](#)

[Downloading Items](#)

[Scheduling Items](#)

[Page Extraction](#)

[Right click Popup menu](#)

[Registration and Support](#)

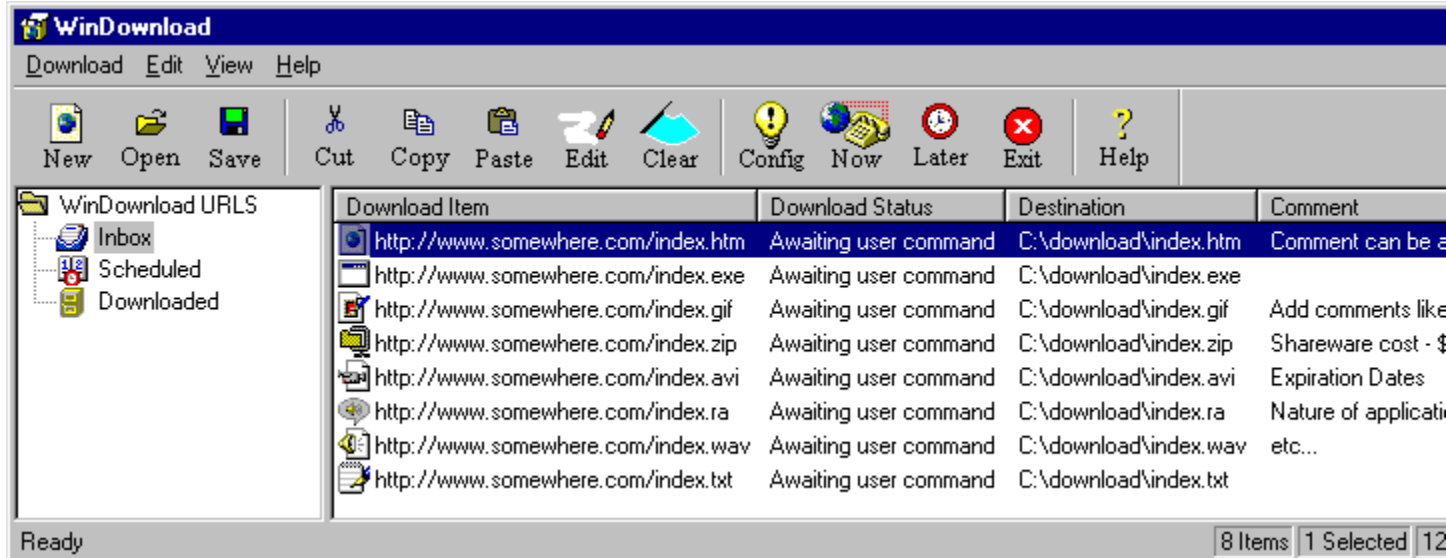
The purpose of WinDownload is to queue up the files that you wish to download to keep from delaying the loading of html pages as you surf the web. You can use WinDownload to schedule downloading for later times or to maximize bandwidth by downloading as many files simultaneously as is efficient.

There are several ways to insert a file into WinDownload: URL = Uniform Resource Locator ... i.e. <http://www.microsoft.com>

- 1) Click "New" and type the URL in manually
- 2) Start Browser and drag and drop link from to main view
- 3) Start Browser, view drop zone, drag and drop to drop zone
- 4) Start Browser, right click link, "copy shortcut", paste to view
- 5) From any text editor, highlight as many URLs as you want, copy them to the clipboard and then paste into WinDownload

Once you have files in WinDownload, you can highlight the ones you want to download and either download them now or schedule them for later. You can also select a file and choose "Download As" to specify an alternate filename and directory.

Below is a clickable image of WinDownload. Select the feature you need help on.



WinDownload Technical support and Registration

